


REVISIONS			
REV	DESCRIPTION	DATE	APPROVED



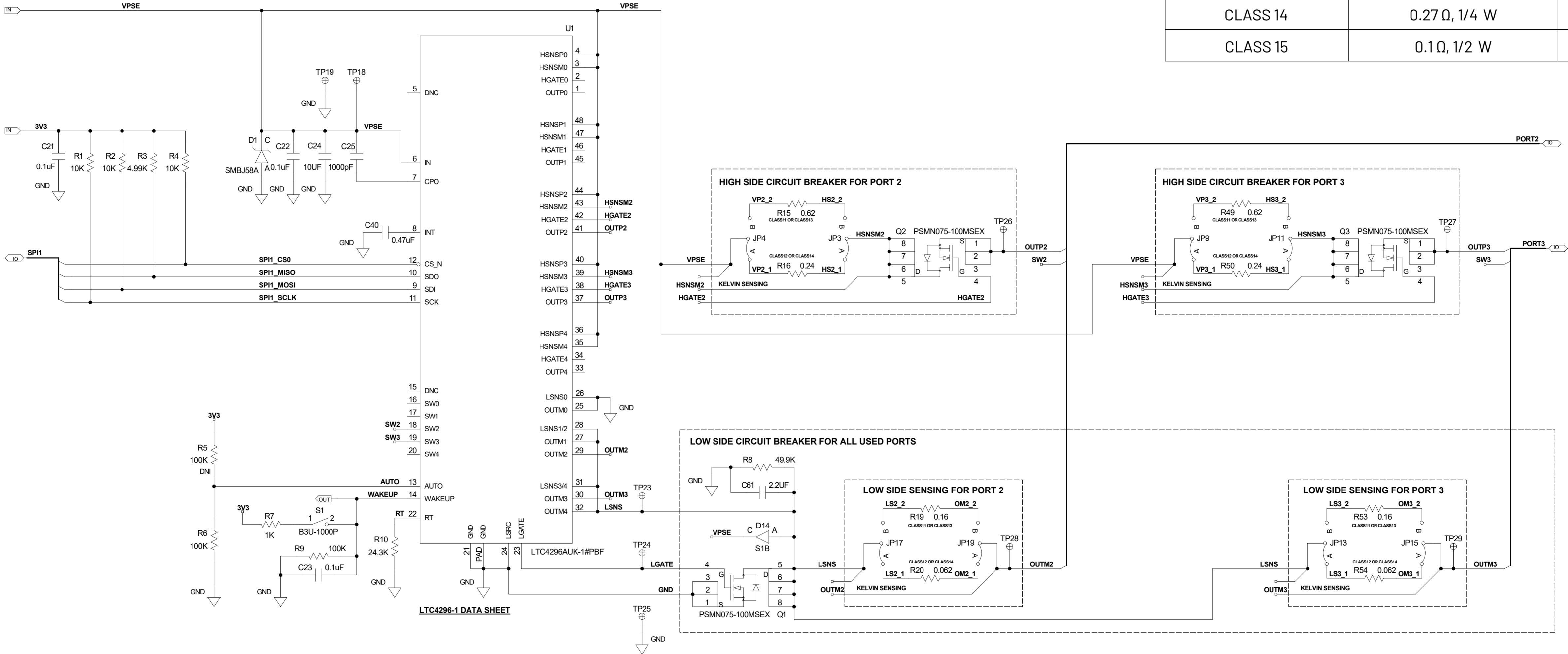
	SCHEMATIC			
	HW TYPE : Customer Evaluation Z Product(s): LTC4296-1 : ADIN2111			
THIS DRAWING IS THE PROPERTY OF ANALOG DEVICES INC. IT IS NOT TO BE REPRODUCED OR COPIED IN WHOLE OR IN PART, OR USED IN ANY MANNER, WITHOUT THE WRITTEN PERMISSION OF ANALOG DEVICES INC. ANY REUSE, REPRODUCTION, OR OTHER VIOLATION IS PROHIBITED, TO THE EXTENT	DESIGN VIEW \$DESIGN_VIEW	DRAWING NO. 02_081781	REV c	
© ANALOG DEVICES THE SOFTWARE DESIGN INFORMATION IS PROTECTED BY PATENTS OWNED OR CONTROLLED BY ANALOG DEVICES	PTD ENGINEER M. BANCISOR	SIZE D	SCALE 1:1	SHEET 3 OF 12

LTC4296-1 5-PORT SPOE PSE CONTROLLER

REVISIONS			
REV	DESCRIPTION	DATE	APPROVED

Class Specific recommended components

IEEE 802.3cg PSE CLASS	HIGH-SIDE SENSE RESISTOR	LOW-SIDE SENSE RESISTOR
CLASS 10	1.6 Ω, 1/10 W	0.4 Ω, 1/10 W
CLASS 11	0.62 Ω, 1/10 W	0.16 Ω, 1/10 W
CLASS 12	0.24 Ω, 1/4 W	0.062 Ω, 1/4 W
CLASS 13	0.68 Ω, 1/10 W	0.18 Ω, 1/10 W
CLASS 14	0.27 Ω, 1/4 W	0.068 Ω, 1/4 W
CLASS 15	0.1 Ω, 1/2 W	0.025 Ω, 1/4 W




IEEE 802.3cg Class Power Requirements Matrix for PSE and PDs

Class Symbol and Unit	Class Description	Class 10	Class 11	Class 12	Class 13	Class 14	Class 15
V _{PSE} (V)	PSE output voltage	20 to 30	20 to 30	20 to 30	50 to 58	50 to 58	50 to 58
I _{PI(MAX)} (mA)	Cable current	92	240	632	231	600	1579
P _{CLASS(MIN)} (W)	PSE output power	1.85	4.8	12.63	11.54	30	79
V _{PD(MIN)} (V)	PD input voltage	14	14	14	35	35	35
P _{PD(MAX)} (W)	PD power	1.23	3.2	8.4	7.7	20	52
R _{LINK_SEG_LOOP} (Ω)	Cable resistance	65	25	9.5	65	25	9.5

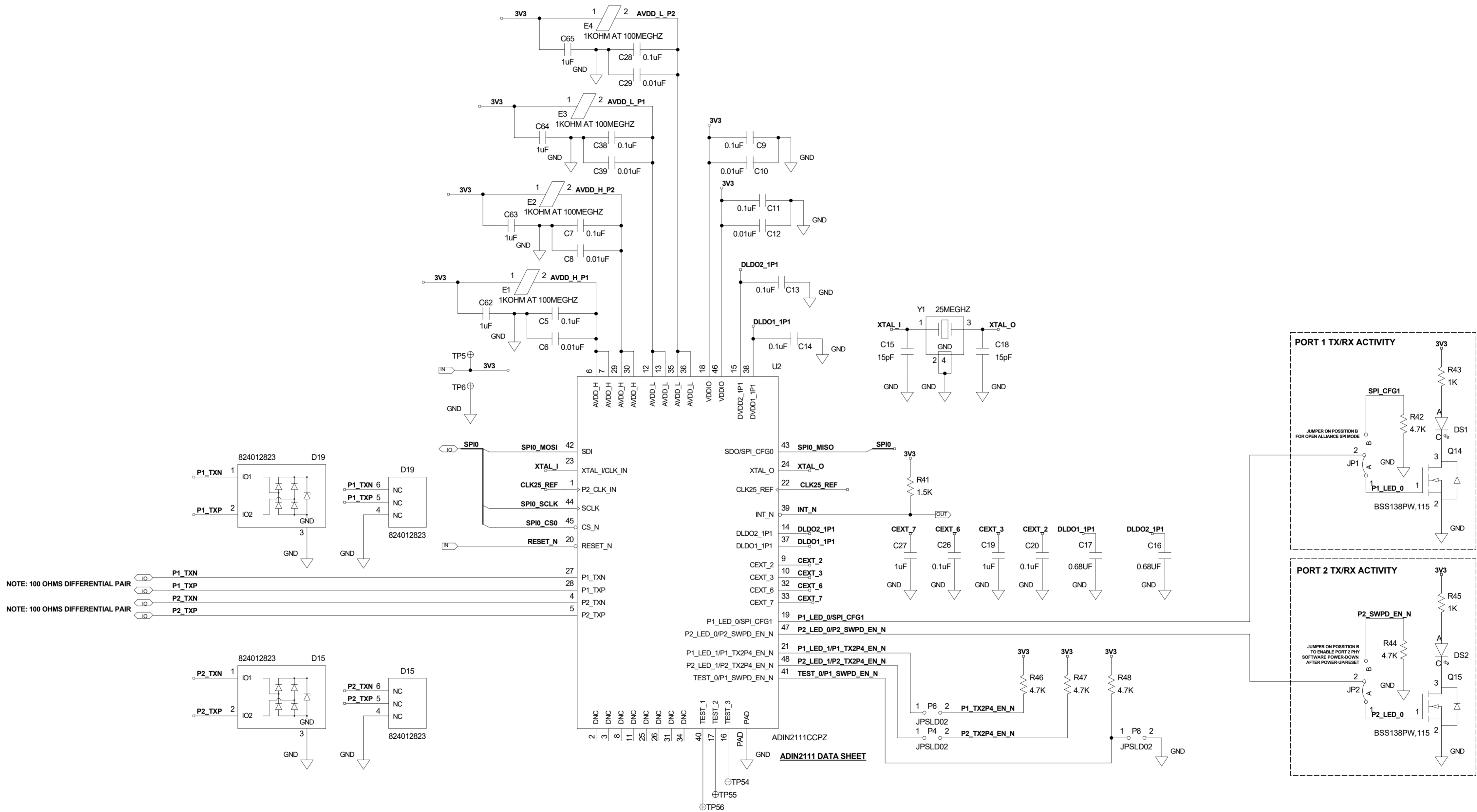
NOTE: The "3PIN_SOLDER_JUMPER" solder jumper default connection to be the same as the symbol representation.

[Back to Block Diagram](#)

 ANALOG DEVICES	SCHEMATIC			
	HW TYPE : Customer Evaluation Z Product(s): LTC4296-1 : ADIN2111			
	DESIGN VIEW \$DESIGN_VIEW	DRAWING NO. 02_081781		REV C
	PTD ENGINEER M. BANCISOR	SIZE D	SCALE 1:1	SHEET 4 OF 12

ADIN2111 2-PORT ETHERNET SWITCH WITH INTEGRATED 10BASE-T1L PHYS

REVISIONS			
REV	DESCRIPTION	DATE	APPROVED



NOTE: The "JPSLD02" solder jumper default connection to be the same as the symbol representation.



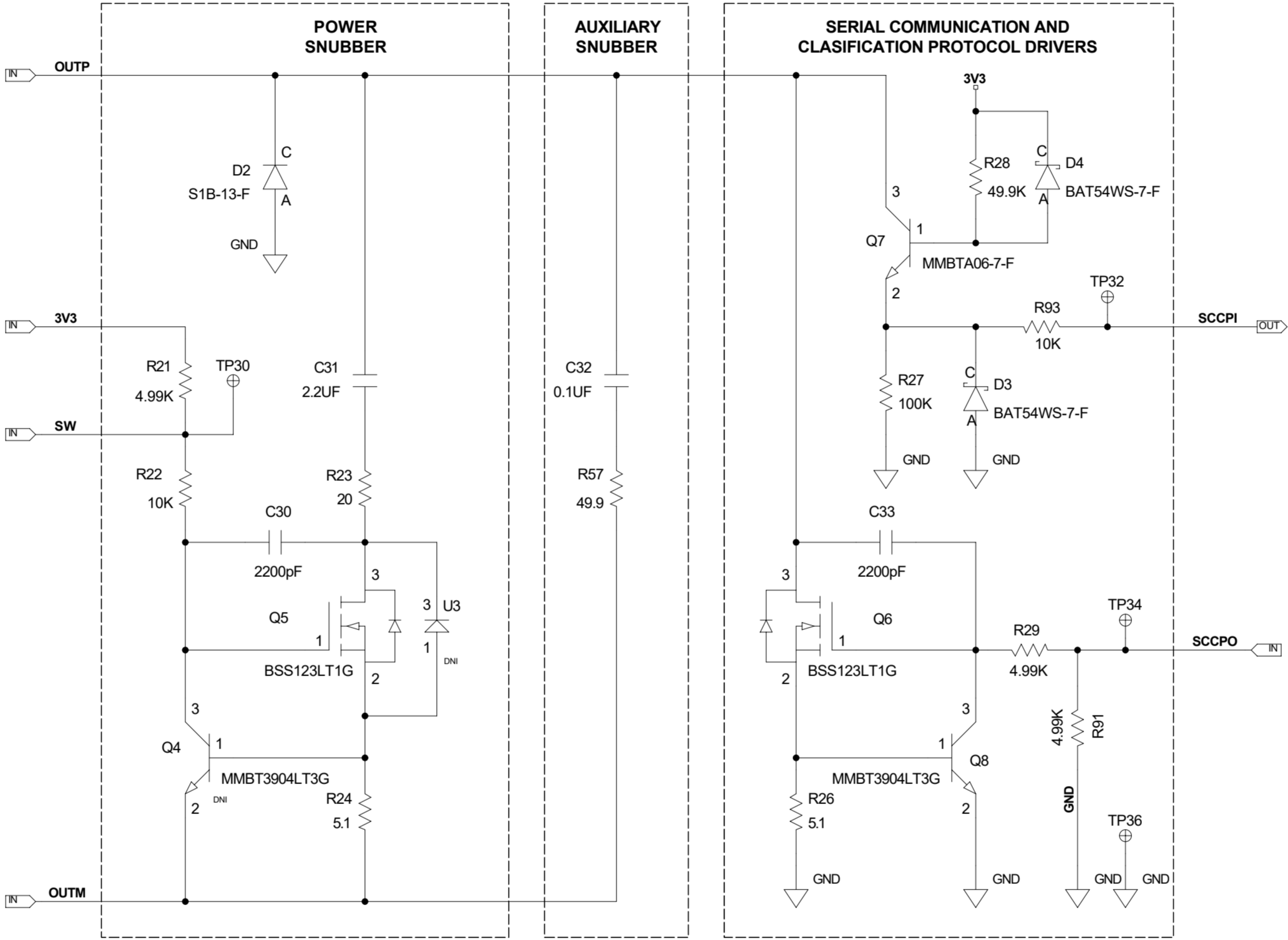
DESIGN VIEW
\$DESIGN_VIEW
PTD ENGINEER
M. BANCISOR

SCHEMATIC			
HW TYPE : Customer Evaluation Z Product(s): LTC4296-1 : ADIN2111			
DRAWING NO. 02_081781		REV c	
SIZE D	SCALE 1:1	SHEET 5	OF 12

[Back to Block Diagram](#)

SNUBBERS AND SERIAL COMMUNICATION AND CLASIFICATION PROTOCOL (SCCP) DRIVERS

REVISIONS			
REV	DESCRIPTION	DATE	APPROVED

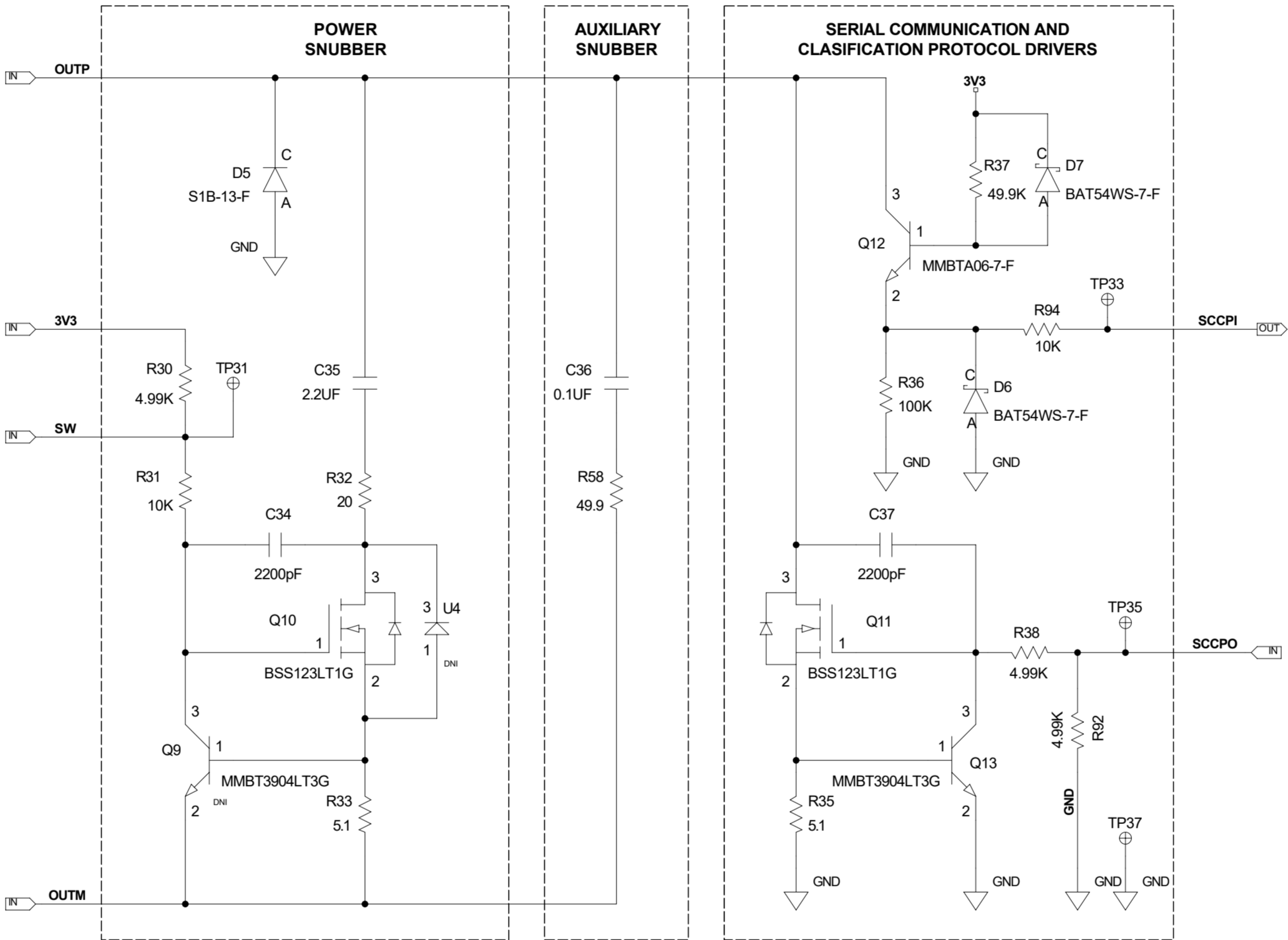


[Back to Block Diagram](#)

	SCHEMATIC						
	HW TYPE : Customer Evaluation Z Product(s): LTC4296-1 : ADIN2111						
	DESIGN VIEW \$DESIGN_VIEW			DRAWING NO. 02_081781		REV c	
	PTD ENGINEER M. BANCISOR			SIZE D	SCALE 1:1	SHEET 6	OF 12

SNUBBERS AND SERIAL COMMUNICATION AND CLASIFICATION PROTOCOL (SCCP) DRIVERS

REVISIONS			
REV	DESCRIPTION	DATE	APPROVED



[Back to Block Diagram](#)

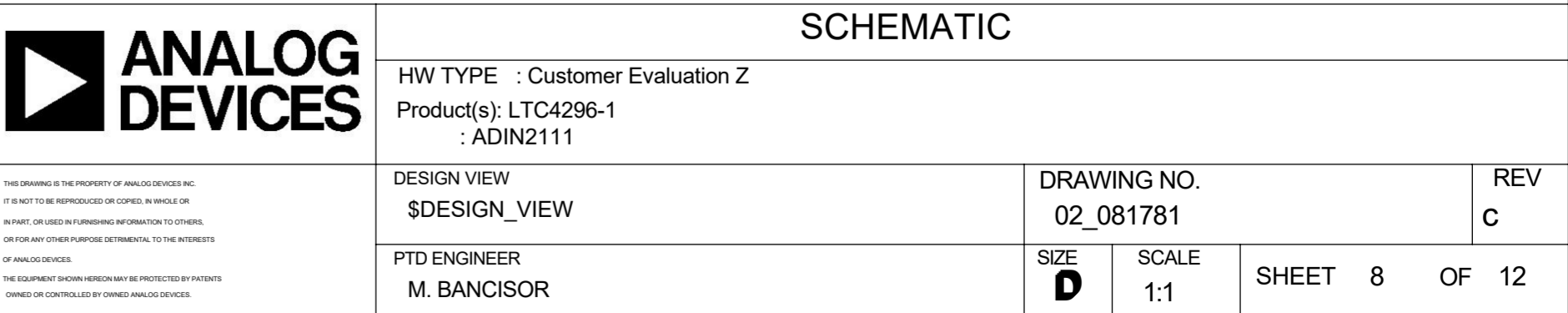
	SCHEMATIC			
	HW TYPE : Customer Evaluation Z Product(s): LTC4296-1 : ADIN2111			
	DESIGN VIEW \$DESIGN_VIEW		DRAWING NO. 02_081781	
	PTD ENGINEER M. BANCISOR		SIZE D	SCALE 1:1

SHEET 7 OF 12

REVISIONS			
REV	DESCRIPTION	DATE	APPROVED



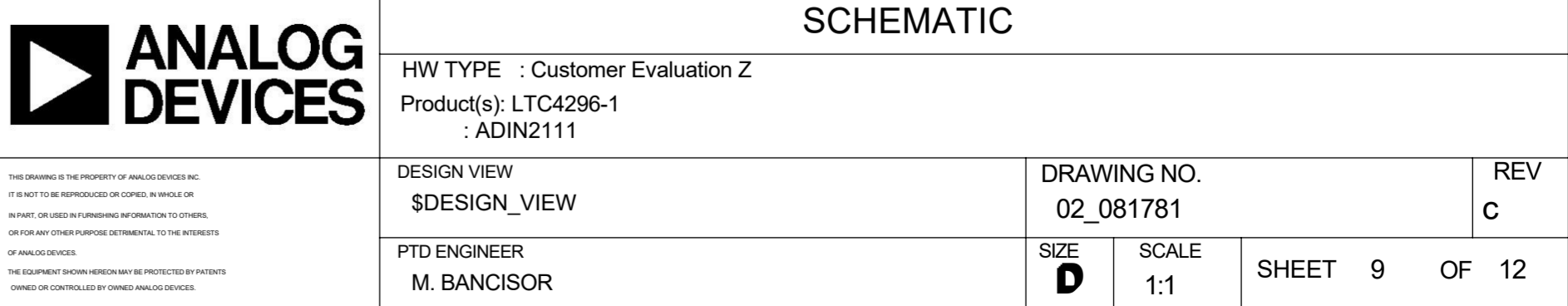
Back to Block Diagram

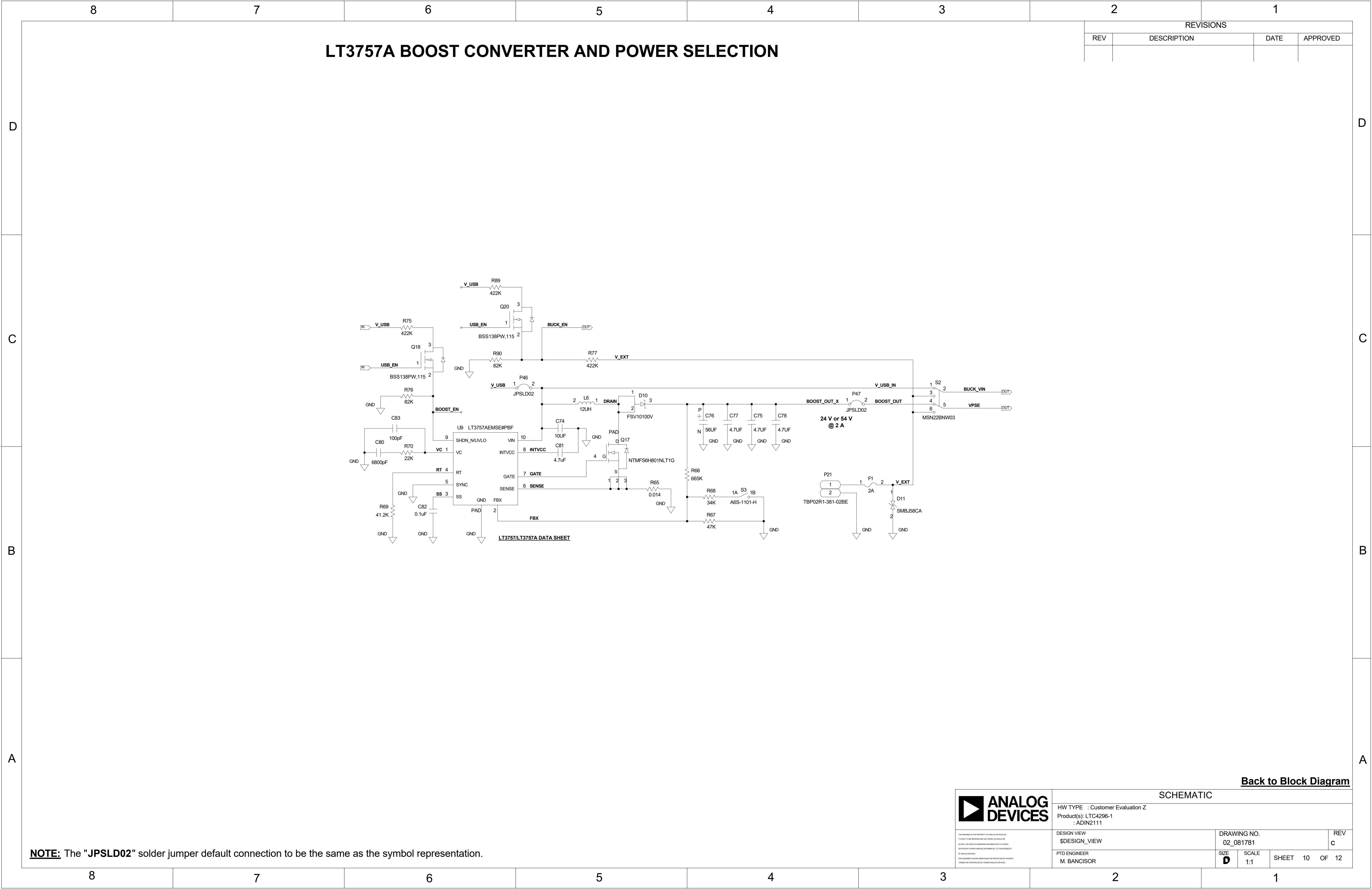


REVISIONS			
REV	DESCRIPTION	DATE	APPROVED

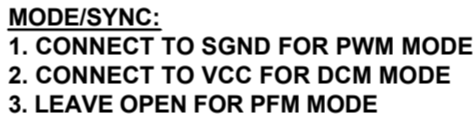


Back to Block Diagram





REVISIONS			
REV	DESCRIPTION	DATE	APPROVED



NOTE: The "3PIN_SOLDER_JUMPER" solder jumper default connection to be the same as the symbol representation.



**ANALOG
DEVICES**

HW TYPE : Customer Evaluation Z
Product(s): LTC4296-1
: ADIN2111

DESIGN VIEW
\$DESIGN_VIEW

PTD ENGINEER
M. BANCISOR

DRAWING NO.
02_081781

REV
C

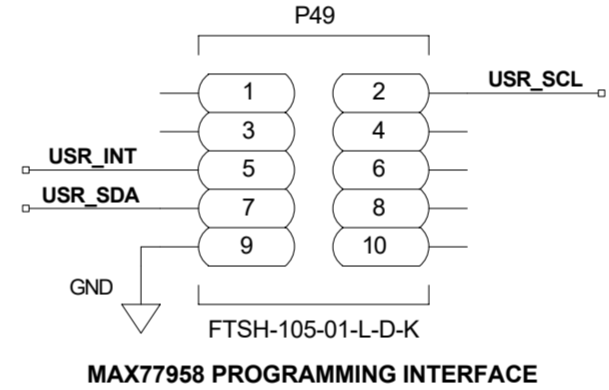
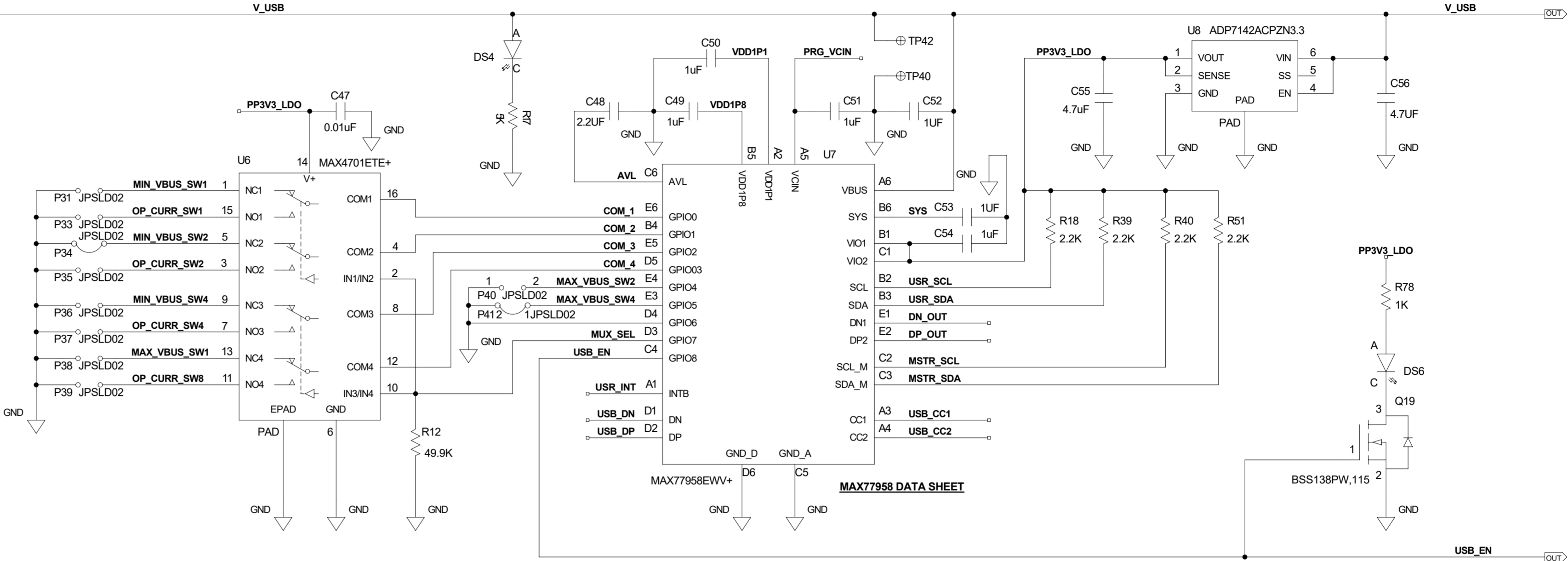
SIZE D	SCALE 1:1	SHEET 11 OF 12
------------------	--------------	----------------

MAX77958 STANDALONE USB TYPE-C AND USB POWER DELIVERY CONTROLLER

REVISIONS			
REV	DESCRIPTION	DATE	APPROVED

MIN_VBUS / MAX_VBUS	MIN_VBUS_SW4 / MAX_VBUS_SW4 (MSB)	MIN_VBUS_SW2 / MAX_VBUS_SW2	MIN_VBUS_SW1 / MAX_VBUS_SW1 (LSB)
5 V	OPEN	OPEN	OPEN
9 V	OPEN	OPEN	SHORT
12 V	OPEN	SHORT	OPEN
15 V	OPEN	SHORT	SHORT
20 V	SHORT	SHORT / OPEN	SHORT / OPEN

OPCURRENT	OP_CURR_SW8 (MSB)	OP_CURR_SW4	OP_CURR_SW2	OP_CURR_SW1 (LSB)
0.5 A	OPEN	OPEN	OPEN	OPEN
1.0 A	OPEN	OPEN	OPEN	SHORT
1.5 A	OPEN	OPEN	SHORT	OPEN
2.0 A	OPEN	OPEN	SHORT	SHORT
2.5 A	OPEN	SHORT	OPEN	OPEN
3.0 A	OPEN	SHORT	OPEN	SHORT
3.5 A	OPEN	SHORT	SHORT	OPEN
4.0 A	OPEN	SHORT	SHORT	SHORT
4.5 A	SHORT	OPEN	OPEN	OPEN
5.0 A	SHORT	OPEN	OPEN	SHORT
5.0 A	SHORT	OPEN	SHORT	OPEN
...
5.0 A	SHORT	SHORT	SHORT	SHORT



DESIGN NOTE: "SHORT" or "OPEN" refers to solder jumper connections.
DESIGN NOTE: All GPIOs are pulled-up internally with 100k equivalent resistors.
LAYOUT NOTE: The "JPSLD02" solder jumper default connection to be the same as the symbol representation.



DESIGN VIEW
\$DESIGN_VIEW
PTD ENGINEER
M. BANCISOR

SCHEMATIC			
HW TYPE : Customer Evaluation Z Product(s): LTC4296-1 : ADIN2111			
DRAWING NO. 02_081781		REV c	
SIZE D	SCALE 1:1	SHEET 12 OF 12	

[Back to Block Diagram](#)